



OMEGA™

4K HDR 3x2 Matrix Switcher

for HDMI and USB-C with HDMI Outputs



AT-OME-SW32

Atlona Manuals
Switchers

Version Information

Version	Release Date	Notes
1	12/18	Release

Welcome to Atlona!

Thank you for purchasing this Atlona product. We hope you enjoy it and will take a extra few moments to register your new purchase.

Registration only takes a few minutes and protects this product against theft or loss. In addition, you will receive notifications of product updates and firmware. Atlona product registration is voluntary and failure to register will not affect the product warranty.

To register your product, go to <http://www.atlona.com/registration>

Sales, Marketing, and Customer Support

Main Office

Atlona Incorporated
70 Daggett Drive
San Jose, CA 95134
United States

Office: +1.877.536.3976 (US Toll-free)
Office: +1.408.962.0515 (US/International)

Sales and Customer Service Hours
Monday - Friday: 6:00 a.m. - 4:30 p.m. (PST)

<http://www.atlona.com/>

International Headquarters

Atlona International AG
Ringstrasse 15a
8600 Dübendorf
Switzerland

Office: +41 43 508 4321

Sales and Customer Service Hours
Monday - Friday: 09:00 - 17:00 (UTC +1)

Operating Notes



IMPORTANT: Visit <http://www.atlona.com/product/AT-OME-SW32> for the latest firmware updates and User Manual.

Atlona, Inc. (“Atlona”) Limited Product Warranty

Coverage

Atlona warrants its products will substantially perform to their published specifications and will be free from defects in materials and workmanship under normal use, conditions and service.

Under its Limited Product Warranty, Atlona, at its sole discretion, will either:

- repair or facilitate the repair of defective products within a reasonable period of time, restore products to their proper operating condition and return defective products free of any charge for necessary parts, labor and shipping.

OR

- replace and return, free of charge, any defective products with direct replacement or with similar products deemed by Atlona to perform substantially the same function as the original products.

OR

- refund the pro-rated value based on the remaining term of the warranty period, not to exceed MSRP, in cases where products are beyond repair and/or no direct or substantially similar replacement products exist.

Repair, replacement or refund of Atlona products is the purchaser’s exclusive remedy and Atlona liability does not extend to any other damages, incidental, consequential or otherwise.

This Limited Product Warranty extends to the original end-user purchaser of Atlona products and is non-transferrable to any subsequent purchaser(s) or owner(s) of these products.

Coverage Periods

Atlona Limited Product Warranty Period begins on the date of purchase by the end-purchaser. The date contained on the end-purchaser’s sales or delivery receipt is the proof purchase date.

Limited Product Warranty Terms – New Products

- 10 years from proof of purchase date for hardware/electronics products purchased on or after June 1, 2013.
- 3 years from proof of purchase date for hardware/electronics products purchased before June 1, 2013.
- Lifetime Limited Product Warranty for all cable products.
- NOTE: Data cable (USB-C) and Wifi antenna covered by 1 year warranty.

Limited Product Warranty Terms – Refurbished (B-Stock) Products

- 3 years from proof of purchase date for all Refurbished (B-Stock) hardware and electronic products purchased on or after June 1, 2013.

Remedy

Atlona recommends that end-purchasers contact their authorized Atlona dealer or reseller from whom they purchased their products. Atlona can also be contacted directly. Visit www.atlona.com for Atlona’s contact information and hours of operation. Atlona requires that a dated sales or delivery receipt from an authorized dealer, reseller or end-purchaser is provided before Atlona extends its warranty services. Additionally, a return merchandise authorization (RMA) and/or case number, is required to be obtained from Atlona in advance of returns.

Atlona requires that products returned are properly packed, preferably in the original carton, for shipping. Cartons not bearing a return authorization or case number will be refused. Atlona, at its sole discretion, reserves the right to reject any products received without advanced authorization. Authorizations can be requested by calling 1-877-536-3976 (US toll free) or 1-408- 962-0515 (US/international) or via Atlona’s website at www.atlona.com.

Exclusions

This Limited Product Warranty excludes:

- Damage, deterioration or malfunction caused by any alteration, modification, improper use, neglect, improper packaging or shipping (such claims must be presented to the carrier), lightning, power surges, or other acts of nature.

Atlona, Inc. (“Atlona”) Limited Product Warranty

- Damage, deterioration or malfunction resulting from the installation or removal of this product from any installation, any unauthorized tampering with this product, any repairs attempted by anyone unauthorized by Atlona to make such repairs, or any other cause which does not relate directly to a defect in materials and/or workmanship of this product.
- Equipment enclosures, cables, power supplies, batteries, LCD displays, and any accessories used in conjunction with the product(s).
- Products purchased from unauthorized distributors, dealers, resellers, auction websites and similar unauthorized channels of distribution.

Disclaimers

This Limited Product Warranty does not imply that the electronic components contained within Atlona’s products will not become obsolete nor does it imply Atlona products or their electronic components will remain compatible with any other current product, technology or any future products or technologies in which Atlona’s products may be used in conjunction with. Atlona, at its sole discretion, reserves the right not to extend its warranty offering in instances arising outside its normal course of business including, but not limited to, damage inflicted to its products from acts of god.

Limitation on Liability

The maximum liability of Atlona under this limited product warranty shall not exceed the original Atlona MSRP for its products. To the maximum extent permitted by law, Atlona is not responsible for the direct, special, incidental or consequential damages resulting from any breach of warranty or condition, or under any other legal theory. Some countries, districts or states do not allow the exclusion or limitation of relief, special, incidental, consequential or indirect damages, or the limitation of liability to specified amounts, so the above limitations or exclusions may not apply to you.

Exclusive Remedy

To the maximum extent permitted by law, this limited product warranty and the remedies set forth above are exclusive and in lieu of all other warranties, remedies and conditions, whether oral or written, express or implied. To the maximum extent permitted by law, Atlona specifically disclaims all implied warranties, including, without limitation, warranties of merchantability and fitness for a particular purpose. If Atlona cannot lawfully disclaim or exclude implied warranties under applicable law, then all implied warranties covering its products including warranties of merchantability and fitness for a particular purpose, shall provide to its products under applicable law. If any product to which this limited warranty applies is a “Consumer Product” under the Magnuson-Moss Warranty Act (15 U.S.C.A. §2301, ET SEQ.) or other applicable law, the foregoing disclaimer of implied warranties shall not apply, and all implied warranties on its products, including warranties of merchantability and fitness for the particular purpose, shall apply as provided under applicable law.

Other Conditions

Atlona’s Limited Product Warranty offering gives legal rights, and other rights may apply and vary from country to country or state to state. This limited warranty is void if (i) the label bearing the serial number of products have been removed or defaced, (ii) products are not purchased from an authorized Atlona dealer or reseller. A comprehensive list of Atlona’s authorized distributors, dealers and resellers can be found at www.atlona.com.

Important Safety Information



CAUTION: TO REDUCE THE RISK OF ELECTRIC SHOCK DO NOT OPEN ENCLOSURE OR EXPOSE TO RAIN OR MOISTURE. NO USER-SERVICEABLE PARTS INSIDE REFER SERVICING TO QUALIFIED SERVICE PERSONNEL.



The exclamation point within an equilateral triangle is intended to alert the user to the presence of important operating and maintenance instructions in the literature accompanying the product.

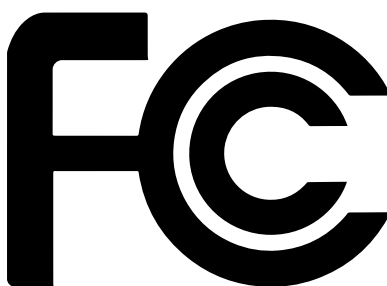


The information bubble is intended to alert the user to helpful or optional operational instructions in the literature accompanying the product.

1. Read these instructions.
2. Keep these instructions.
3. Heed all warnings.
4. Follow all instructions.
5. Do not use this product near water.
6. Clean only with a dry cloth.
7. Do not block any ventilation openings. Install in accordance with the manufacturer's instructions.
8. Do not install or place this product near any heat sources such as radiators, heat registers, stoves, or other apparatus (including amplifiers) that produce heat.
9. Do not defeat the safety purpose of a polarized or grounding-type plug. A polarized plug has two blades with one wider than the other. A grounding type plug has two blades and a third grounding prong. The wide blade or the third prong are provided for your safety. If the provided plug does not fit into your outlet, consult an electrician for replacement of the obsolete outlet.
10. Protect the power cord from being walked on or pinched particularly at plugs, convenience receptacles, and the point where they exit from the product.
11. Only use attachments/accessories specified by Atlona.
12. To reduce the risk of electric shock and/or damage to this product, never handle or touch this unit or power cord if your hands are wet or damp. Do not expose this product to rain or moisture.
13. Unplug this product during lightning storms or when unused for long periods of time.
14. Refer all servicing to qualified service personnel. Servicing is required when the product has been damaged in any way, such as power-supply cord or plug is damaged, liquid has been spilled or objects have fallen into the product, the product has been exposed to rain or moisture, does not operate normally, or has been dropped.



FCC Statement



FCC Compliance and Advisory Statement: This hardware device complies with Part 15 of the FCC rules. Operation is subject to the following two conditions: 1) this device may not cause harmful interference, and 2) this device must accept any interference received including interference that may cause undesired operation. This equipment has been tested and found to comply with the limits for a Class A digital device, pursuant to Part 15 of the FCC Rules. These limits are designed to provide reasonable protection against harmful interference in a commercial installation.

This equipment generates, uses, and can radiate radio frequency energy and, if not installed or used in accordance with the instructions, may cause harmful interference to radio communications. However there is no guarantee that interference will not occur in a particular installation. If this equipment does cause harmful interference to radio or television reception, which can be determined by turning the equipment off and on, the user is encouraged to try to correct the interference by one or more of the following measures: 1) reorient or relocate the receiving antenna; 2) increase the separation between the equipment and the receiver; 3) connect the equipment to an outlet on a circuit different from that to which the receiver is connected; 4) consult the dealer or an experienced radio/TV technician for help. Any changes or modifications not expressly approved by the party responsible for compliance could void the user's authority to operate the equipment. Where shielded interface cables have been provided with the product or specified additional components or accessories elsewhere defined to be used with the installation of the product, they must be used in order to ensure compliance with FCC regulations.

Table of Contents

Introduction	8
Features	8
Package Contents	8
Panel Description	9
Installation	10
Captive Screw Connections	10
Mounting Instructions	11
Connection Instructions	12
IP Modes	12
Connection Diagram	13
WebGUI	14
Appendix	23
Specifications	23

Introduction

The Atlona AT-OME-SW32 is a 3x2 matrix switcher with HDMI and USB-C inputs, and HDMI outputs. It is HDCP 2.2 compliant and supports 4K HDR and 4K/60 4:4:4 at HDMI data rates up to 18 Gbps. The USB-C input is ideal for AV interfacing with newer Mac®, Chromebook™, and Windows® PCs, as well as smartphones and tablets. Additionally, 4K downscaling to 1080p is available on HDMI output 1 when connected to an HD sink. Depending on the intended application, the OME-SW32 can be set to specific switching modes that include mirrored outputs (default), one of the outputs fixed to an input, or unrestricted matrix switching.

For additional integration convenience, the OME-SW32 features automatic input selection, automatic display control, balanced audio de-embedding (linked to HDMI output 1), control via TCP/IP and RS-232, and remote management with AMS (Atlona Management System). This versatile, compact matrix switcher is ideal for under-table mounting in meeting spaces, to serve applications with side-by-side displays, videoconferencing, interfacing with OmniStream networked AV systems, secondary switching into a larger AV system, and more.

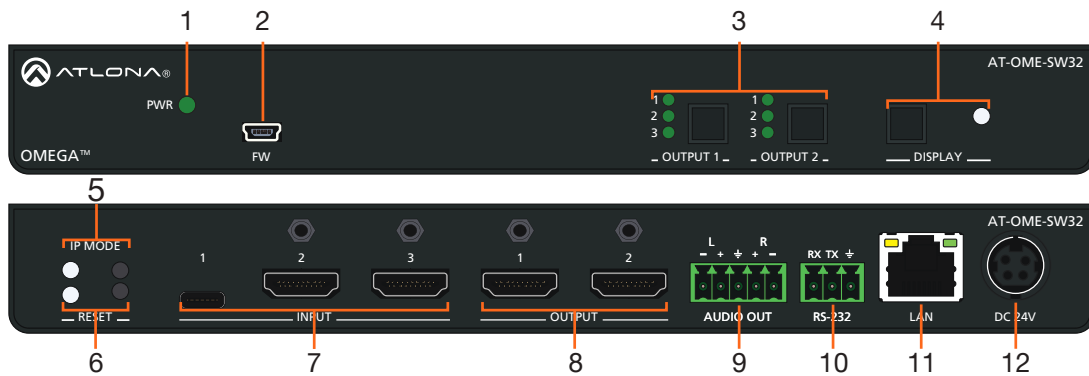
Features

- Three selectable switching modes
- Supports resolutions up to 4K/UHD 60Hz @ chroma sub-sampling 4:4:4, 4K HDR, Dolby Vision, and HLG
- HDCP 2.2 compliant
- EDID learning for multiple display EDIDs
- Built in internal EDIDs provide 12 unique EDIDs to ensure compatibility
- Multiple control options such as RS-232, TCP/IP, webGUI, and front panel
- Multi-channel audio pass through up to Dolby Digital Plus, Dolby TrueHD, DTS-HD Master Audio, and Dolby Atmos
- 2Ch audio de-embedding using the analog audio port

Package Contents

- 1 x AT-OME-SW32
- 1 x Captive screw connector, 5-pin
- 1 x Captive screw connector, 3-pin
- 1 x USB-C cable
- 4 x Mounting screws
- 1 x Pair rack mount ears
- 1 x 24V DC power supply
- 1 x IEC power cord
- 1 x Installation Guide

Panel Description



- 1 PWR LED**
Illuminates green when receiving power.
- 2 FW port**
Connect a mini USB cable from this port to a PC to firmware update the unit.
- 3 OUTPUT 1 & OUTPUT 2**
Use the button to switch between sources, the LEDs will illuminate to show the selected source.

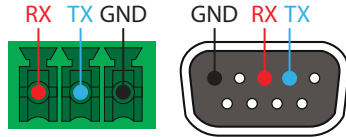
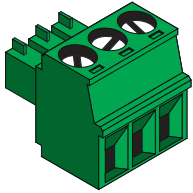
NOTE: Output two button and LED will only be functional in Matrix Mode.
- 4 DISPLAY button and LED**
Press the display button to trigger an on/off command for the display. The LED will blink while the command is being sent. By default, the display button will mute the video output of the HDMI ports.
- 5 IP MODE button and LED**
Press and hold the button for 5 seconds until the LED blinks to switch the IP mode between DHCP and Static IP modes. The LED will blink 2 times for DHCP and 3 times for static IP.
- 6 RESET button and LED**
Press and hold the button for 5 seconds until the unit resets. The LED will blink as the unit resets to factory default settings.
- 7 INPUT**
Connect the USB-C or HDMI sources to these ports.
- 8 OUTPUT**
Connect HDMI cables from these ports to HDMI displays.
- 9 AUDIO OUT**
Connect to an audio DSP, amplifier, or other audio distribution devices.
- 10 RS-232**
Use for device or display control.
- 11 LAN**
Connect an Ethernet cable from this port to a Local Area Network (LAN).
- 12 DC 24V**
Connect the included DC 24V power supply to this port.

Installation

Captive Screw Connections

RS-232

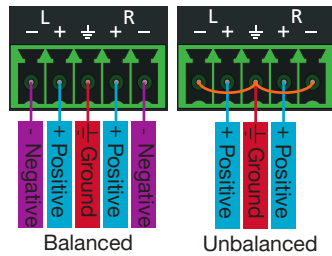
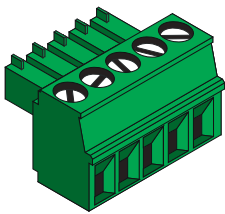
Connect to a control system for unit switching or to a display for power and audio display control.



Pin out will be determined by the RS-232 cable and connect as RX (receive), TX (transmit) and \perp (Ground).

Audio

De-embeds audio from HDMI Output 1 to send to an audio DSP, amplifier, or other audio distribution devices.



Use a jumper between the negative and ground pins when using an unbalanced connection.

Mounting Instructions

The AT-OME-SW32 includes two mounting brackets and four mounting screws, which can be used to attach the units to any flat surface.

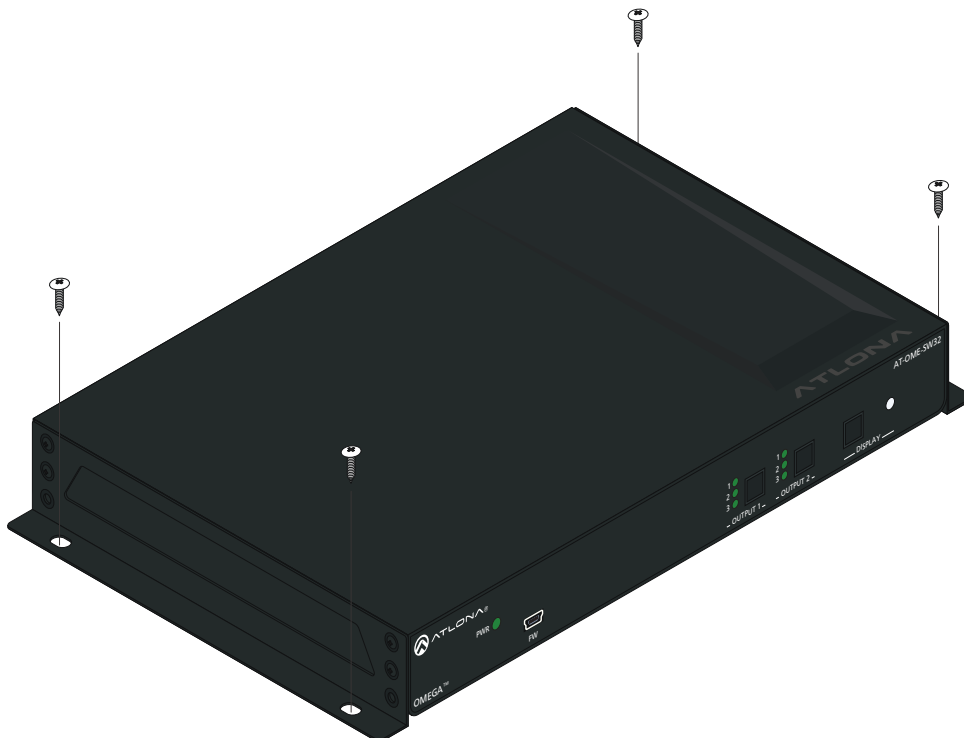
1. Remove the top 2 case screws on the side of the unit.
2. Align the mounting brackets to the side of the units.
3. Use the previously removed case screws to secure the mounting bracket to the enclosure.
4. Repeat the steps for the other side of the unit.



4. Mount the unit using the oval-shaped holes, on each mounting bracket. If using a drywall surface, a #6 drywall screw is recommended.



NOTE: Mounting brackets can also be inverted to mount the unit under a table or other flat surface.



Connection Instructions

1. Connect HDMI and USB-C Sources to the inputs.
2. Connect up to two HDMI displays to the outputs.
3. Connect the 2CH analog AUDIO OUT ports to a DSP, or audio amplifier (e.g. AT-GAIN-60).
4. *Optional* For control, connect to the 3-pin captive screw RS-232 port.
5. *Optional* Connect a network switch to the LAN port, for IP control, system configuration, or Ethernet routing.
6. Connect the included DC 24V power supply to the power port.
7. Connect the included IEC power cord from the power supply to a compatible power outlet.

IP Modes

DHCP

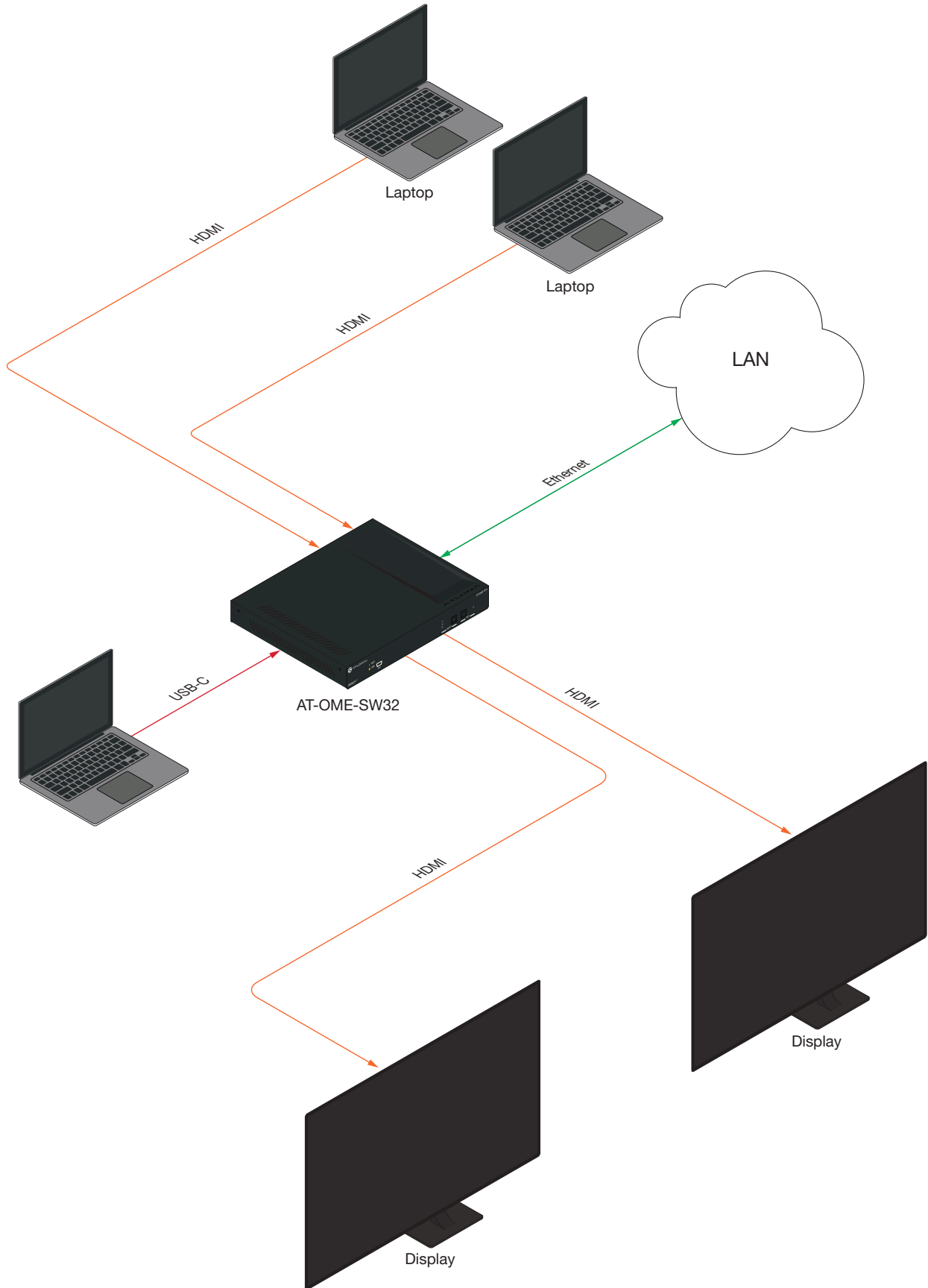
By default, the AT-OME-SW32 is set to DHCP mode. In this mode, when the AT-OME-SW32 is connected to the Local Area Network (LAN), it will automatically be assigned an IP address by the DHCP server (if available).

Static

If no DHCP server is available, or a static IP is required, the SW32 can be set to static IP mode using the IP reset button or webGUI.

- Press and hold the **IP RESET** button for 5 seconds to switch to static IP mode, the LED will blink 3 times when it goes into Static IP mode. In this mode, the AT-OME-SW32 will be set to the following:
IP address: 192.168.1.254
Subnet mask: 255.255.0.0
Gateway: 192.168.1.1
- To switch back to DHCP, press and hold the IP reset button for 5 seconds. The LED will blink 2 times when successfully put into DHCP mode.

Connection Diagram

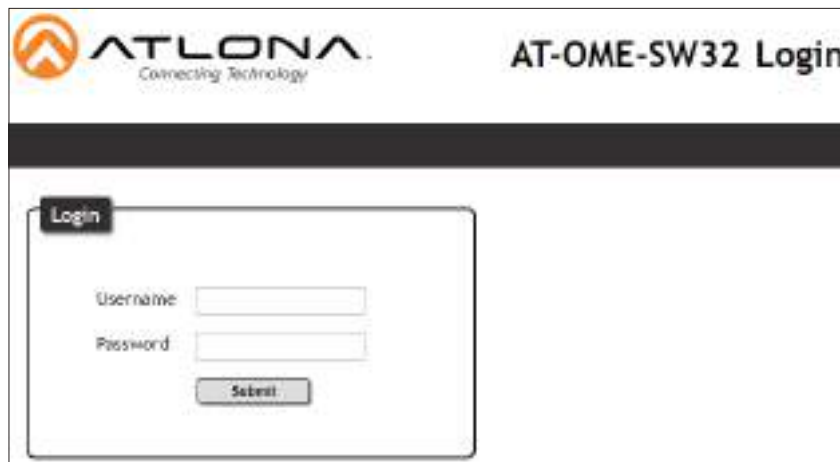


WebGUI

The AT-OME-SW32 includes a built-in webGUI, which allows easy remote management and control of all features. Follow the instructions below to access the webGUI.

1. Make sure that an Ethernet cable is connected between the **LAN** port on the AT-OME-SW32 and the network.
2. Use an IP scanner to determine the IP address of the unit.
3. Launch a web browser and enter the IP address in the address bar.
4. The AT-OME-SW32 **Login** page will be displayed.
5. Enter the following information on the **Login** page.

Login: admin
 Password: Atlona

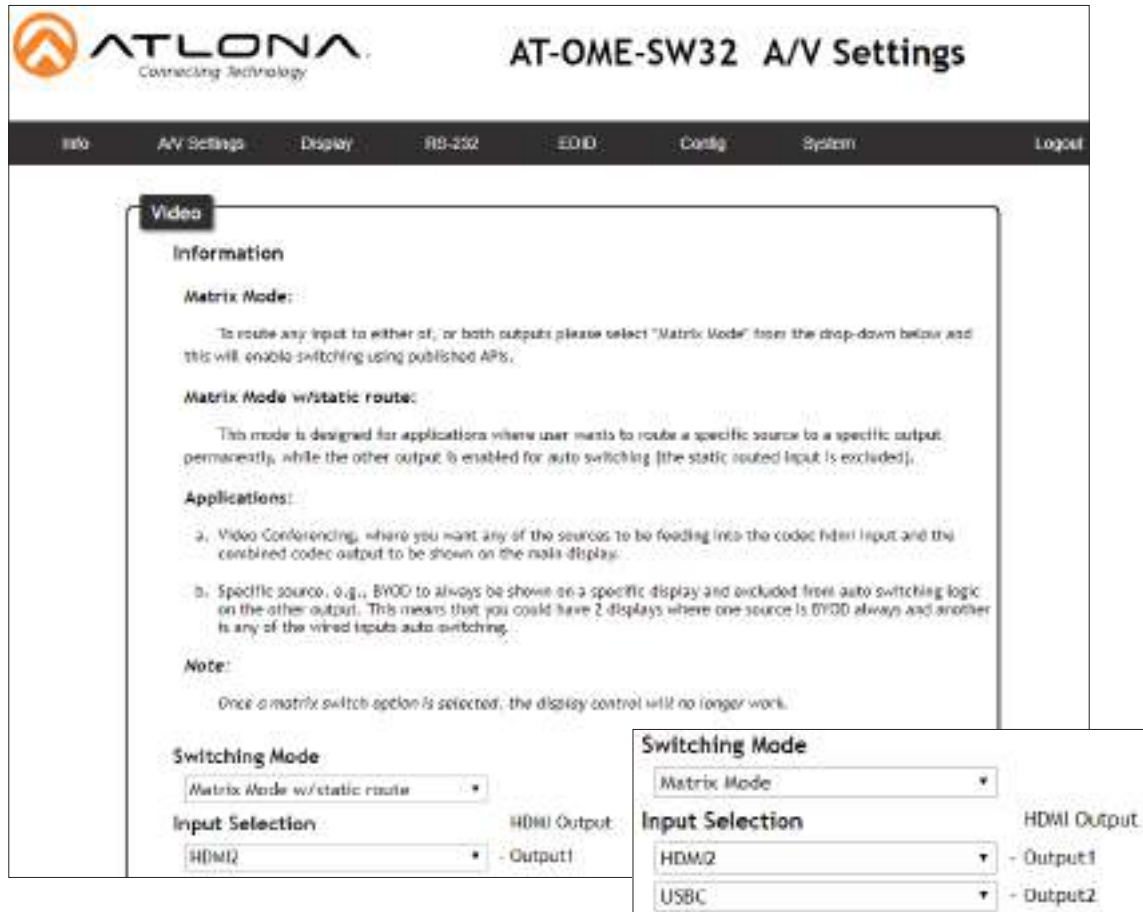


6. Click the Login button. The info page will display, giving all the general information of the AT-OME-SW32.



Audio/Video Settings

Select A/V Settings from the top navigation to adjust routing and video settings.



Matrix Switching

Mirrored - When selected from the drop down menu, both HDMI outputs will pass source signal from the same selected source. This mode is selected by default.

Matrix Mode - When selected, each HDMI Output will route source signals independently.

Matrix Mode w/static route - Selecting this will enable the second output to auto route input signals while the first output will stay fixed to the chosen input.

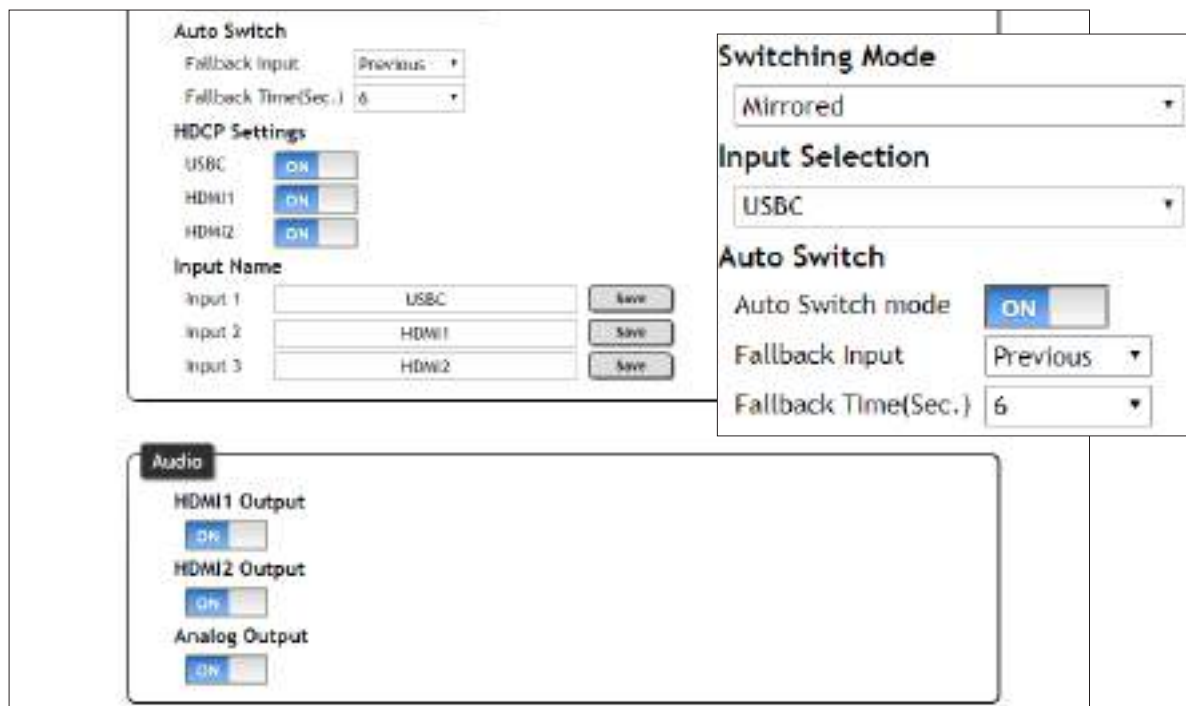


NOTE: When Matrix Mode is selected, display control becomes inoperable and the Display tab will be inaccessible in the webGUI.

Input Selection

Depending on the switching mode selected, there will be one (mirrored or matrix mode w/static route) or two (matrix mode) drop down menus for selecting.

The second drop down menu will switch input signals for output two, when in static mode, it will not auto switch when new sources are connected or powered on.



Auto Switch

Auto Switch mode - Set switching to auto (on) to have the source change when detecting new signal or the currently selected source is no longer sending signal.

i NOTE: The auto switching slider is greyed out when in Matrix or Matrix w/static route mode.

Fallback Input - Select whether the unit will auto switch to the last signal detected before the current input signal stopped (Previous) or set it to return to a specific input.

Fallback Time (Sec.) - Set the amount of time in seconds between loss of signal and the input falling back to the selected port.

HDCP Settings

On - Sets the HDCP of the unit to auto, allowing HDCP to switch between compliant and non-compliant according to the source and display HDCP status.

Off - Sets the unit to HDCP non-compliant. No HDCP compliant source signals will pass in this mode.

i NOTE: Some sources flag all content as protected, by selecting HDCP off the source device may send only user created content. In some cases, the source must be configured to send content to non-HDCP devices (e.g. HDCP must be turned off within a PS4's settings to pass unprotected content).

Input Name

Type in an alias to help remember what is connected to each port for switching.

Audio

On - Unmutes the audio output signal, allowing audio to pass through the output.

Off - Mutes the audio output signal of the selected port. No audio will pass when selected.

i NOTE: Analog audio output is de-embedded from HDMI output port 1.
NOTE: Audio must be 2 channel to de-embed and is not downmixed from multichannel.

Display

Select Display from the top navigation to adjust display control settings.

NOTE: The Display page is only available when in mirrored or matrix switching w/static mode.



CEC

Command: Power - Press to send the CEC power on or off command out through the HDMI ports.

System Settings

Display Auto Power On - Sets the unit to send the display power on command to the output, after the power on delay amount, when signal is received.

Display Auto Power Off - Sets the unit to send the display power off command to the output when signal is no longer received for the set auto power off time.

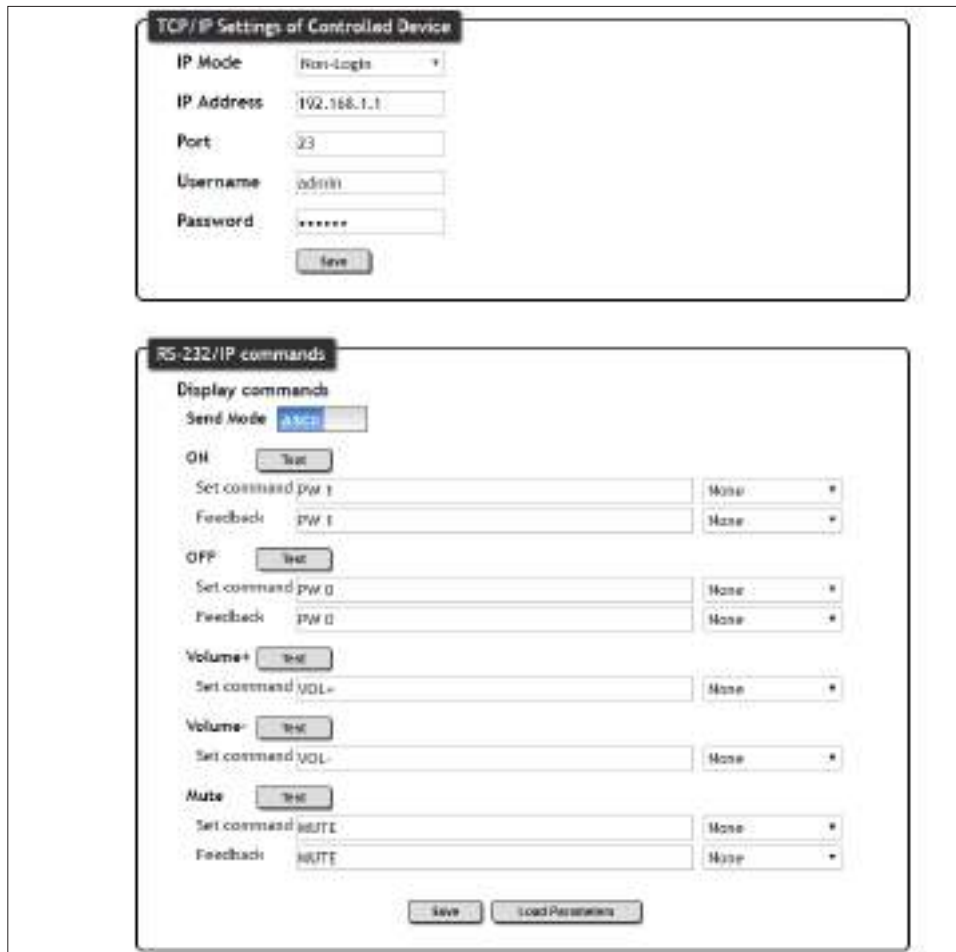
Lamp cool down timer - Sets the time between when the display is turned off and when the next command can be sent.

Auto power off timer - Sets the time between when the last signal was received and the display power off command is sent.

Power on delay timer - Sets the amount of time between when the display is turned on to when the unit sends any commands.

Control Type - Selects which command type is used to send commands and what type of control signal is sent when the display button is pressed. Options are CEC, TCP/IP or RS-232.

Feedback Verify - Enable (on) or disable (off) feedback verification to a control system or hyper terminal.



TCP/IP Settings of Controlled Device

IP Mode - Toggle telnet login mode between Non-Login and Login. If set to Login, a username and password will be required to control the unit via TCP/IP.

IP Address - Sets to the IP of the controlled device/display.

Telnet Port - Set the telnet port of the controlled device for control. Default is 23.

Username & Password - Sets the username and password that is required when login mode is enabled.

RS-232 / IP Commands

Send Mode - Switch command format between ASCII and HEX.

Set Command - Type in the command found within the display's manual.

Termination Drop Down - Select the command termination type. The options are: None, CR (carriage return), LF (line feed), CR-LF (carriage return and line feed), Space, STX (start-of-text character), ETX (end-of-text character), and Null (null character/binary zero).

Feedback - Provide the feedback found within the display's manual.

Test - Use this button to send the command to the display, to ensure the commands are correct.

Save - Save the commands to the webGUI.

RS-232

Select RS-232 from the top navigation to adjust the zone control parameters for the RS-232 port.



RS-232 Parameter Setting

Zone - Select the baud rate, data bit, parity, and stop bit to match the display's parameters. Defaults are 115200, 8, None, and 1.

EDID

Select EDID from the top navigation to save/load EDIDs.



EDID

EDID Settings - Use the drop down menu to select from default (highest common resolution between source and display), 12 internal EDIDs, and previously saved EDIDs.

EDID Saved - The ID field will display the memory # and currently saved EDID name, select the output from the drop down menu to be saved. Once the output is selected, press the save button to make it available in the EDID settings drop down menus.

NOTE: Output 1 provides automatic 4K to 1080p scaling. In order for the scaling to be.



Users

Admin Password - Update the admin password for the switcher. Only the admin password may be changed, the username will remain admin.

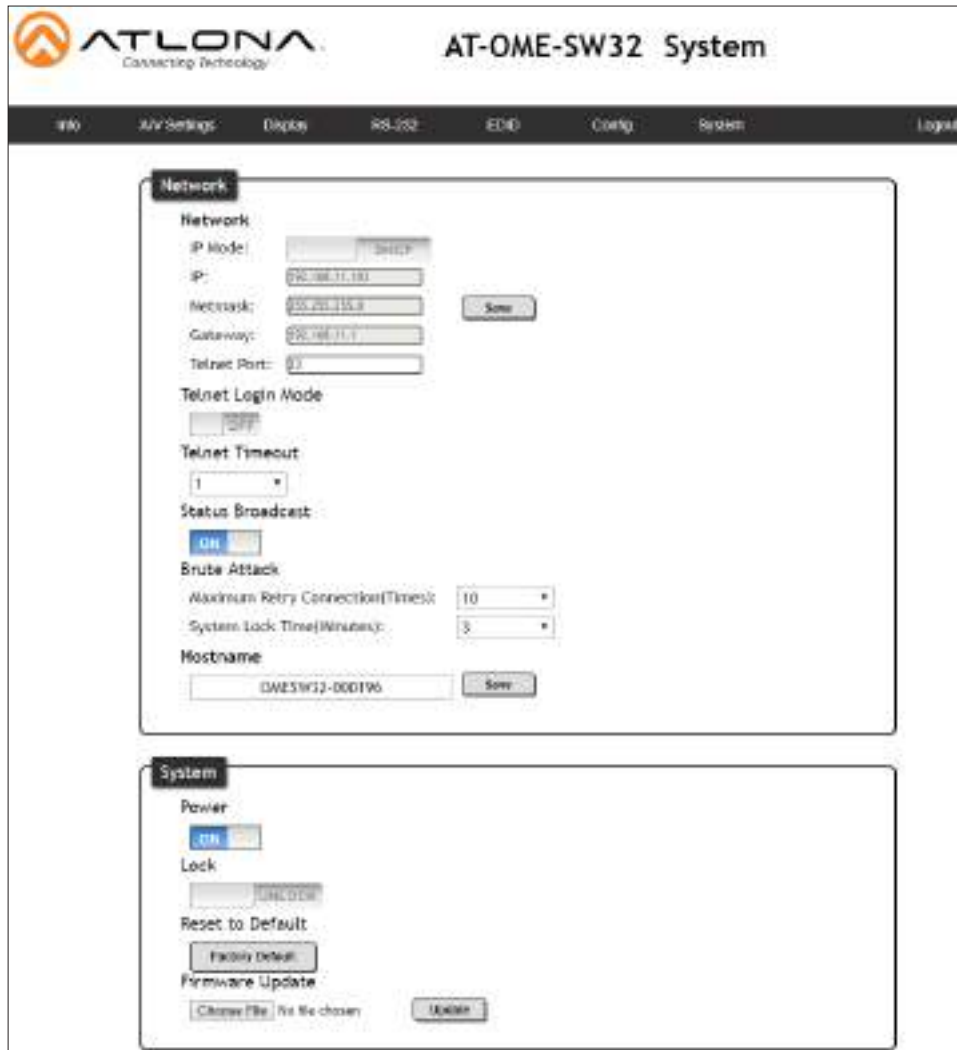
Additional Users - Add up to three additional users, each with individual passwords.

i NOTE: The passwords cannot contain any special characters. e.g. !@#\$/^&*?\?+-;,'".

Add/Edit a user:

- Select the **Add/Edit** button. A pop up will appear.
- Type in the new/updated username and/or password.
- Press the **Save Change** button.





Network

IP Mode - Switch between static and DHCP modes by selecting DHCP or Static.

IP, Netmask, Gateway - This will display the current IP settings on DHCP. When set to static, fill in the IP address, netmask, and gateway.

Telnet Port - Set the telnet port if needed for control. Default port is 23.

Telnet Login Mode - Toggle telnet login mode on and off. If on, a username and password will be required to control the unit via TCP/IP.

Telnet Timeout - Set the amount of time between actions before the current user is logged out. Default is 10000 seconds.

Status Broadcast - Toggle to set the Broadcast mode **ON** or **OFF**. This provides feedback for control system use.

Brute Attack - Adds a layer of security to prevent users from attempting to login with incorrect credentials.

- Maximum Retry Connection: Select the number of login attempts that are allowed before the system locks out the username. Default is 10.
- System Lock Time: Select the system lock-out time in minutes. Default is 3.

Hostname - Set the name for the matrix, this will show up in network discovery.



System

Power - Toggle the SW32 between on and standby (off) mode.

Lock - Lock or unlock the front panel buttons.

Reset to Default- Press the Factory Default button to set the unit back to all factory settings, including IP mode.

Firmware update - Use the choose file button to search the local PC for the firmware file. Once selected, press the update button to start the firmware update.

i NOTE: Firmware updates and release notes can be found at <https://atlona.com/product/AT-OME-SW32/> .

Appendix

Specifications

Connectors, Controls, and Indicators	
HDMI IN	2 - Type A, 19-pin female
HDMI OUT	2 - Type A, 19-pin female
USB-C IN	1 - USB Type-C v3.1, 24-pin female, AV input (Alternate Mode)
FW	1 - Mini-USB, 5-pin female
AUDIO OUT	1 - 5-pin captive screw, balanced / unbalanced 2-channel
RS-232	1 - 3-pin captive screw (bidirectional)
LAN	1 - RJ45
DC 24V	1 - 4-pin, locking
PWR indicator	1 - LED, green
LINK indicator	1 - LED, amber
Control Buttons: INPUT, DISPLAY, IP MODE, RESET	4 - momentary, tact-type
Input Indicators: USB-C, HDMI IN 1, HDMI IN 2	3 - LED, green

Video		
UHD/HD/SD	4096x2160@60/30/25/24Hz*, 3840x2160@60/30/25/24Hz*, 1080p@60/59.9/50/30/29.97/25/24/23.98Hz, 1080i@30/29.94/25Hz, 720p@60/59.94/50Hz, 576p@50Hz, 576i@50Hz, 480p@60/59.96Hz, 480i@30Hz	
VESA @ 60Hz	2560x1600, 2048x1536, 1920x1200, 1680x1050, 1600x1200, 1440x900, 1400x1050, 1280x1024, 1280x800, 1366x768, 1360x768, 1152x864, 1024x768, 800x600, 640x480	
Scaler (HDMI output 1 only)	IN 4K @ 24 Hz 4K @ 30 Hz 4K @ 60 Hz, 4:2:0	OUT 1080p @ 24 Hz 1080p @ 30 Hz 1080p @ 60 Hz (YUV/RGB, 4:4:4)
USB-C	Up to 4K/UHD @ 60Hz	
Color Space	YUV, RGB	
Chroma Subsampling	4:4:4, 4:2:2, 4:2:0	
Color Depth	8-bit, 10-bit, 12-bit	
HDR	HDR10, Hybrid-Log Gamma (HLG), and Dolby® Vision™ @ up to 60Hz	

Audio	
HDMI Pass-Through Formats	PCM 2.0, LPCM 5.1, LPCM 7.1, Dolby® Digital, Dolby Digital Plus™, Dolby TrueHD, Dolby Atmos®, DTS® Digital Surround™, DTS-HD Master Audio™, and DTS:X®
Analog Audio Format	PCM 2.0
Sample Rate	32 kHz, 44.1 kHz, 48 kHz, 88.2 kHz, 96 kHz, 176.4 kHz, 192 kHz
Bit Rate	24 Mbits/s max

Resolution / Distance	4K/UHD - Feet / Meters		1080p - Feet / Meters		HDR - Feet / Meters	
HDMI IN/OUT	15	5	30	10	10	3

Signal	
HDMI	HDMI 2.0
CEC Support	Yes
HDCP	2.2

Temperature	Fahrenheit	Celsius
Operating	32 to 122	0 to 50
Storage	-4 to 140	-20 to 60
Humidity (RH)	20% to 60%, non-condensing	

Power	
Operational	6.98 W
Idle	2.85 W
Supply	Input: 100 - 240 V AC, 50/60 Hz Output: 24 V / 2.7A DC

Dimensions	Inches	Millimeters
H x W x D	1.02 x 8.62 x 5.98	26 x 219 x 152

Weight	Pounds	Kilograms
Device	1.87	0.85

Certification	
Device	CE, FCC, UL

