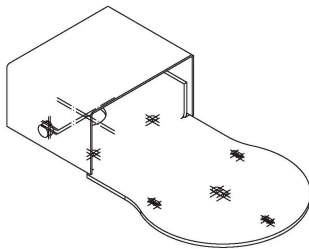
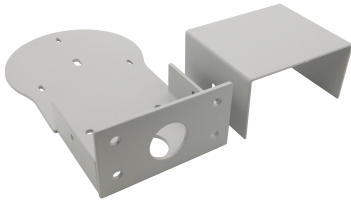


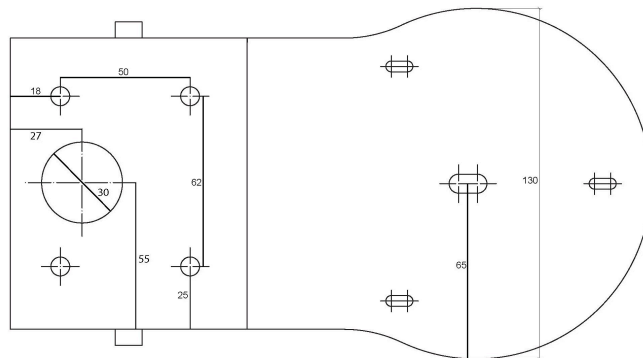
DATASHEET AV-MT200

Avonic Wall Mount Black/White for CM40 & CM70 series

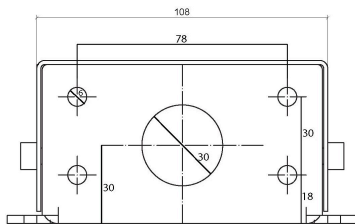
The Avonic MT200 is a solid wall mount suitable for the CM40 or CM70 series. Its discrete design matches the silent operation of Avonic PTZ cameras. The wall mount is a beautiful extension that not only ensures great and safe support of a PTZ camera but also allows for all the cables to be hidden inside the mount. For mobile applications the MT200 can be mounted in a flight case or installed on a tripod. Accessories include a heavy-duty 30mm steel ring specifically designed to mount the MT200 on a truss clamp. Available in black and white to match our PTZ cameras.



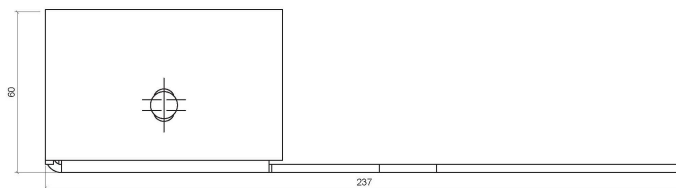
3D View



Top view



Rear View



Side View

Specifications

Color	Black, White	Black	AV-MT200-B
Dimensions product	2370 x 60 x 130 mm	White	AV-MT200-W
Weight	1.060 kg		
Included	MT200 Wall Mount, 1x Black 30MM Cover Cap, 1x 30MM Steel Ring, 1x 1/4"- UNC Pozidrive screw to fasten camera, M6*10mm 2x Allen Bolt screw, M3*6mm DIN9785 5x Pozidrive security screw		