



HT-TRK1

Apollo Technology Room Kit

FEATURES

- 4K Compatibility Built on long-range HDBaseT Technology
- Versatile, All-in-One System
- Control and Security
- DSP Mixing Function
- Built-In Audio System
- Power, Video and Control over Cat6a up to 330 feet
- Simple Operation with Web GUI Interface



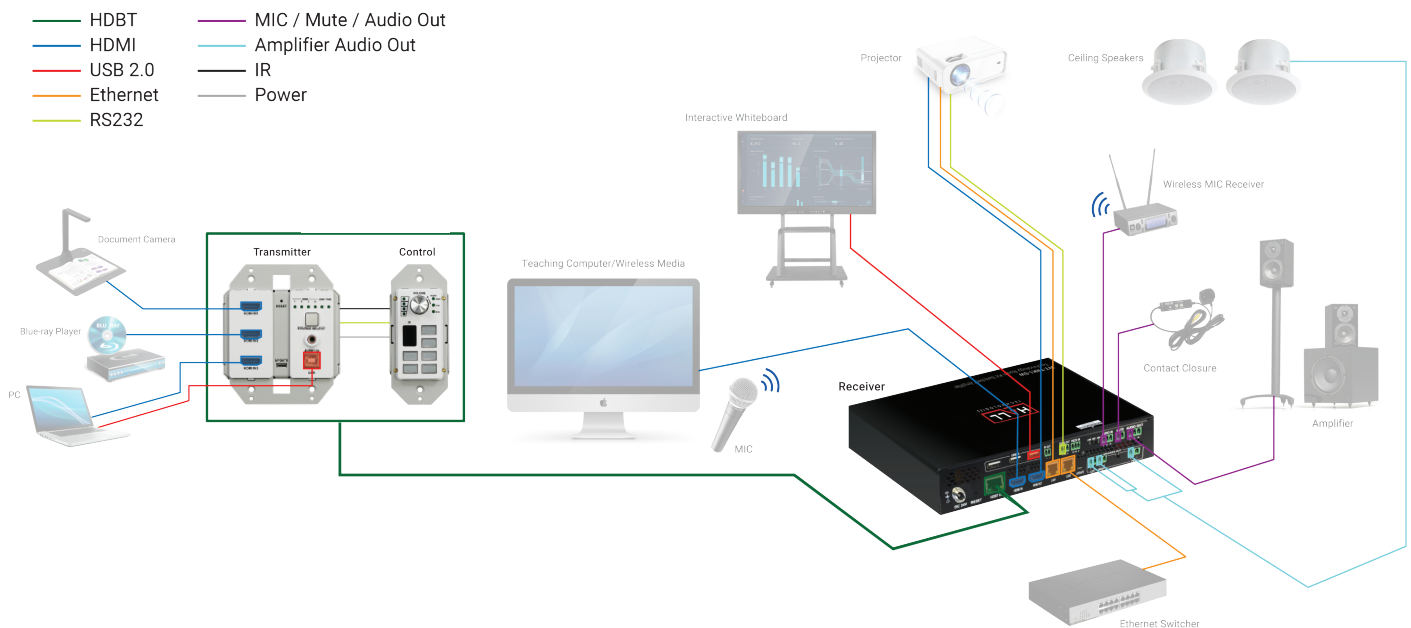
DESCRIPTION

Designed with ease-of-use, flexibility and reliability in mind, the APOLLO Room Kit offers a complete packaged solution for workspaces and learning environments alike. APOLLO provides HDMI video switching, system control, video extension and analog audio amplification – all in a convenient three-piece kit.

Utilizing the long-range HDBaseT technology, power, control, video up to 4K@60Hz and audio are transported over a single Category 6a cable between a wall plate transmitter and the receiver with a minimum transport distance of 30m/100ft. The wall plate control panel allows remote switching of the sources and volume control from a convenient location. You can switch among four HDMI Inputs, and you can scale the HDMI inputs up to 4K@60Hz.

Additionally, the receiver features a built-in Web UI for control and analog audio de-embedding to your choice of a built-in 20W stereo amplifier for driving low impedance speakers, a 70V amplifier for driving commercial 70V speakers or stereo analog audio outputs.

The system includes monitoring software for easy multi-room configuration, system monitoring and control along with easy firmware updating of all devices from a central networked computer. An integrated Ethernet switch allows easy configuration with the IP Network.





Technical	
Input/Output Port	<p>Transmitter: 3 x HDMI IN; 1 x Source Selector Button; 1 x AUDIO IN; 1 x USB Type-B Host; 1 x Micro USB FW update port; 1 x HDBT OUT; 1 x RJ45; 1 x REBOOT button</p> <p>Receiver: 1 x HDBT IN; 1 x HDMI IN, 1 x HDMI OUT; 2 x LAN; 1 x Micro USB FW update port; 1 x 4Q/8Q SPEAKER OUT; 1 x 70V SPEAKER OUT; 1 x Speaker Out Select Switch; 3 x USB Type-A Device; 1 x IR OUT; 1 x RS232 IN; 1 x RS232 OUT; 1 x select switch (LINE IN/MIC IN/MIC IN with phantom power); 1 x AUDIO IN; 1 x MUTE IN; 1 x AUDIO OUT; 1 x DC 24V; 1 x RESET button</p> <p>Control Panel: 1 x Volume control knob; 1 x IR Sensor; 6 x Button; 1 x RJ45</p>
Input Signal Type	<p>Transmitter HDMI with 4K@60Hz YUV 4:2:0, HDCP 2.2</p> <p>Receiver: HDMI with 4K@60Hz YUV 4:4:4, HDCP 2.2</p>
Input Resolution Supported	<p>HDMI IN on Transmitter: VESA: 800x600⁸, 1024x768⁸, 1280x768⁸, 1280x800⁸, 1280 x960⁸, 1280x1024⁸, 1360x768⁸, 1366x768⁸, 1440x900⁸, 1600x900⁸, 1600x1200⁸, 1680x1050⁸, 1920x1200⁸</p> <p>SMPT: 1280x720P^{6,7,8}, 1920x1080P^{6,7,8}, 3840x2160^{2,3,5,8*}, 4096x2160^{2,3,5,8*}</p> <p>1 = at 23.98 Hz, 2 = at 24 Hz, 3 = at 25 Hz, 4 = at 29.97 Hz, 5 = at 30 Hz, 6 = at 50 Hz, 7 = at 59.94 Hz, 8 = at 60 Hz, * = 4:2:0</p> <p>HDMI IN on Receiver: VESA: 800x600⁸, 1024x768⁸, 1280x768⁸, 1280x800⁸, 1280x960⁸, 1280x1024⁸, 1360x768⁸, 1366x768⁸, 1440x900⁸, 1600x900⁸, 1600x1200⁸, 1680x1050⁸, 1920x1200⁸</p> <p>SMPT: 1280x720P^{6,7,8}, 1920x1080P^{6,7,8} 3840x2160^{2,3,5,8}, 4096x2160^{2,3,5,8}</p> <p>1 = at 23.98 Hz, 2 = at 24 Hz, 3 = at 25 Hz, 4 = at 29.97 Hz, 5 = at 30 Hz, 6 = at 50 Hz, 7 = at 59.94 Hz, 8 = at 60 Hz</p>
Output Signal Type	HDMI with 4K@60Hz YUV 4:4:4, HDCP 2.2
Output Resolution Supported	<p>VESA: 800x600⁸, 1024x768⁸, 1280x768⁸, 1280x800⁸, 1280x960⁸, 1280x1024⁸, 1360x768⁸, 1366x768⁸, 1440x900⁸, 1600x900⁸, 1600x1200⁸, 1680x1050⁸, 1920x1200⁸</p> <p>SMPT: 1280x720P^{6,8}, 1920x1080P^{6,8} 3840x2160^{2,3,5,6,8}, 4096x2160^{2,3,5,8}</p> <p>1 = at 23.98 Hz, 2 = at 24 Hz, 3 = at 25 Hz, 4 = at 29.97 Hz, 5 = at 30 Hz, 6 = at 50 Hz, 7 = at 59.94 Hz, 8 = at 60 Hz</p> <p>Note: Built-in Scaler cannot output resolutions with Deep Color, HDR and 4:2:2/4:2:0 color space.</p>
Audio Format	<ul style="list-style-type: none"> HDMI IN/OUT: Stereo All AUDIO IN & MIC/LINE IN: Stereo AUDIO OUT & 4Q/8Q SPEAKER OUT: Stereo 70V SPEAKER OUT: Mono
Maximum Data Rate	HDMI IN, HDBT OUT on transmitter & HDBT IN on receiver: 10.2Gbps HDMI IN & HDMI OUT on receiver: 18Gbps
Control Method	Control Panel; Button on transmitter; LAN control (Web UI/Telnet); RS232

General	
Operating Temperature	0°C to 45°C (32°F to 113°F)
Storage Temperature	-20°C to 70°C (-4°F to 158°F)
Humidity	10% to 90%, non-condensing
ESD Protection	Human-body Model: ±8kV (Air-gap discharge)/ ±4kV (Contact discharge)
Power Supply	DC 24V 5A
Power Consumption (Max)	81W
Device Dimension (W x H x D)	<p>Transmitter: 89mm x 105.6mm x 43mm/ 3.5" x 4.16" x 1.69"</p> <p>Receiver: 215mm x 42mm x 160.2mm/ 8.46" x 1.65" x 6.31"</p> <p>Control Panel: 45mm x 105.6mm x 28.7mm/ 1.77" x 4.16" x 1.13"</p>
Product Weight	<p>Transmitter: 0.3kg/0.66lb Receiver: 1.43kg/3.15lb Control Panel: 0.16kg/0.35lb</p>

Cable Type	Range	Supported Video
Cat 5e	100m/330ft	Up to 1080P@60Hz 36bpp
	90m/295ft	1080P@60Hz 48bpp
Cat 6/6a/7	100m/330ft	1080P@60Hz 3D
		4K@30Hz 4:4:4 24bpp 4K@60Hz 4:2:0 24bpp
HDMI	Input: 15m/50ft Output: 10m/33ft	1080P@60Hz 24bpp
	Input/Output: 10m/33ft	4K@30Hz 4:4:4 24bpp 4K@60Hz 4:2:0 24bpp
	Input: 5m/16ft Output: 3m/10ft	4K@60Hz 4:4:4 24bpp