



SMART STREAM

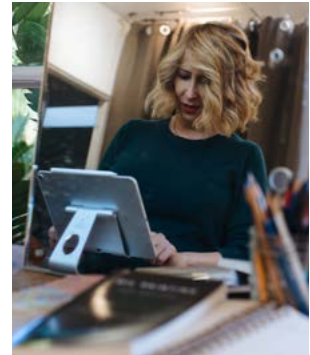
The Smart Stream is a preamplifier that expands your existing music system into the world of streaming. Welcome internet radio, Spotify, Tidal, Qobuz, bluetooth, AirPlay and much more!

No more FM radio? Poor DAB reception? The Smart Stream is the solution. With the 4STREAM app, you get to choose your favourites among all radio stations around the world. You get the best possible sound quality for your wireless or wired internet connection.

In addition to the built-in sources, the Smart Stream also has a whole bunch of inputs and outputs for all your other devices.

The Smart Stream is happy to be used alongside the other members of our Smart family: the Smart Hyde and Smart Zone 4 and extensions. You can turn it into one big multiroom system.

description	streaming pre-amplifier
internet radio	> 10 000 stations worldwide
music services	Spotify Connect, Tuneln, vTuner, Deezer, Tidal, Qobuz, ... Bluetooth 5.0 Apple AirPlay NAS via UPnP/dlna
input	stereo RCA, optical, USB (mass storage)
output	stereo RCA + subwoofer
tone control	volume, treble, bass
functions	alarm function / sleep timer
internet connection	ethernet RJ45, 2.4G wifi
control	4STREAM app (iOS + Android), API, 12V trigger out
power supply	12V/1A DC
dim. (h x w x d)	41 x 148 x 120mm
weight	0,37kg



With the Smart Stream, you can breathe new life into your "old" hi-fi. Hello world of streaming music!

Music services



UPnP dlna

