



# **Epson Wireless Transmitter Settings Operation Guide**

---

## **Notations Used in This Guide 3**

<b>Using the Manual to Search for Information .....</b>	<b>4</b>
Searching by Keyword .....	4
Jumping Directly from Bookmarks.....	4
Printing Only the Pages You Need.....	4

---

## **Introduction to the Epson Wireless Transmitter Settings Software 5**

<b>Epson Wireless Transmitter Settings Features.....</b>	<b>6</b>
--	----------

---

## **Setting Up the Software for the First Time 7**

<b>Setting up the Software .....</b>	<b>8</b>
Epson Wireless Transmitter Settings System Requirements .....	8
Getting the Epson Wireless Transmitter Settings Software (Windows/Mac).....	8

---

## **Performing Pairing and Updating Firmware 9**

<b>Performing the Pairing .....</b>	<b>10</b>
<b>Updating the Firmware .....</b>	<b>12</b>

---

## **Solving Problems 14**

<b>Solving Pairing and Firmware Updating Problems.....</b>	<b>15</b>
Solutions When You Cannot Select the Receiver .....	15
Solutions When You Cannot Perform Pairing .....	15
Solutions When You Cannot Update Firmware.....	15

---

## **Appendix 16**



<b>Removing the Software .....</b>	<b>17</b>
<b>Notices.....</b>	<b>18</b>
Copyright Notice .....	18
About Notations .....	18
General Notice.....	18
Copyright Attribution .....	18

# Notations Used in This Guide




## Safety Symbols

The projector and its manuals use graphical symbols and labels to indicate content that tells you how to use the product safely.

Read and carefully follow the instructions that are marked with these symbols and labels to avoid injury to persons or damage to property.

 <b>Warning</b>	This symbol indicates information that, if ignored, could possibly result in personal injury or even death.
 <b>Caution</b>	This symbol indicates information that, if ignored, could possibly result in personal injury or physical damage due to incorrect handling.

## General Information Notations

<b>Attention</b>	This label indicates procedures that may result in damage or injury if sufficient care is not taken.
	This label indicates additional information that may be useful to know.
[Button name]	Indicates the name of the buttons on the remote control or the control panel. Example: [Esc] button
<b>Menu/Setting name</b>	Indicates projector menu and setting names. Example: Select the <b>Image</b> menu  <b>Image &gt; Advanced</b>
»	This label indicates links to the related pages.
	This label indicates the projector's current menu level.

## » Related Links

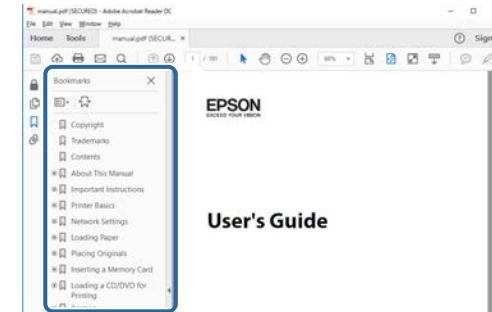
- "Using the Manual to Search for Information" [p.4](#)

The PDF manual allows you to search for information you are looking for by keyword, or jump directly to specific sections using the bookmarks. You can also print only the pages you need. This section explains how to use a PDF manual that has been opened in Adobe Reader X on your computer.

### ► Related Links

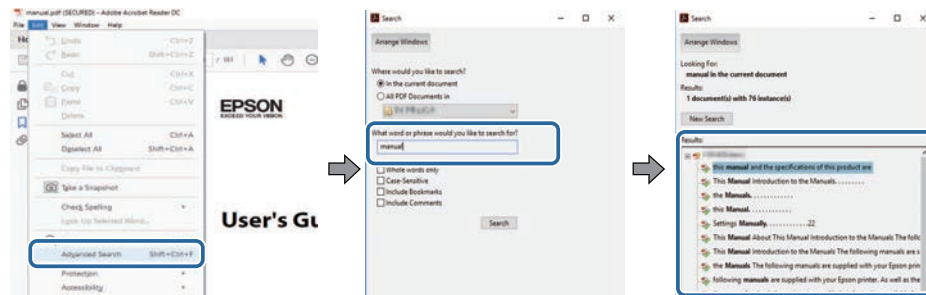
- "Searching by Keyword" [p.4](#)
- "Jumping Directly from Bookmarks" [p.4](#)
- "Printing Only the Pages You Need" [p.4](#)

- Mac OS: Hold down the command key, and then press ←.



## Searching by Keyword

Click **Edit > Advanced Search**. Enter the keyword (text) for information you want to find in the search window, and then click **Search**. Hits are displayed as a list. Click one of the displayed hits to jump to that page.



## Printing Only the Pages You Need

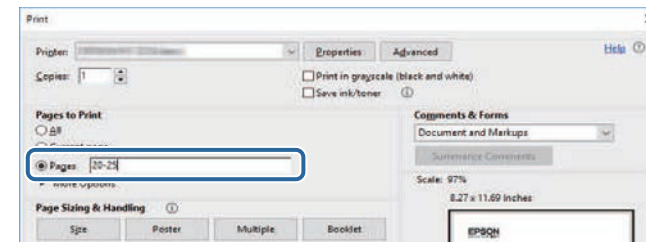
You can extract and print only the pages you need. Click **Print** in the **File** menu, and then specify the pages you want to print in **Pages in Pages to Print**.

- To specify a series of pages, enter a hyphen between the start page and the end page.  
Example: 20-25
- To specify pages that are not in series, divide the pages with commas.  
Example: 5, 10, 15

## Jumping Directly from Bookmarks

Click a title to jump to that page. Click + or > to view the lower level titles in that section. To return to the previous page, perform the following operation on your keyboard.

- Windows: Hold down **Alt**, and then press ←.



# Introduction to the Epson Wireless Transmitter Settings Software

See the information here to learn more about the Epson Wireless Transmitter Settings software.

## ► **Related Links**

- "Epson Wireless Transmitter Settings Features" [p.6](#)

The Epson Wireless Transmitter Settings software allows you to perform pairing between the transmitter and the receiver such as a base unit or a supported projector, and update firmware for the transmitter.

You can also control the connection bandwidth of data when transferring to the receiver.

# Setting Up the Software for the First Time

Follow these instructions to set up the Epson Wireless Transmitter Settings software.

## ▶ **Related Links**

- "Setting up the Software" [p.8](#)

Check the system requirements necessary to run the software.

► **Related Links**

- "Epson Wireless Transmitter Settings System Requirements" [p.8](#)
- "Getting the Epson Wireless Transmitter Settings Software (Windows/Mac)" [p.8](#)

## Epson Wireless Transmitter Settings System Requirements

Your computer must meet the following system requirements to use the Epson Wireless Transmitter Settings software.

Requirement	Windows	Mac
Operating system	Windows 8.1 <ul style="list-style-type: none"> <li>• Windows 8.1 (32- and 64-bit)</li> <li>• Windows 8.1 Pro (32- and 64-bit)</li> <li>• Windows 8.1 Enterprise (32- and 64-bit)</li> </ul>	macOS <ul style="list-style-type: none"> <li>• 10.13.x (64-bit)</li> <li>• 10.14.x (64-bit)</li> <li>• 10.15.x (64-bit)</li> <li>• 11.0.x (64-bit)</li> </ul>
	Windows 10 <ul style="list-style-type: none"> <li>• Windows 10 Home (32- and 64-bit)</li> <li>• Windows 10 Pro (32- and 64-bit)</li> <li>• Windows 10 Enterprise (32- and 64-bit)</li> </ul>	
CPU	Intel Core2Duo or faster (Intel Core i3 or faster recommended)	Intel Core2Duo or faster (Intel Core i5 or faster recommended)
Memory	2 GB or more (4 GB or more recommended)	
Hard disk space	50 MB or more	
Display	Resolution more than 800 × 600 (SVGA)	

## Getting the Epson Wireless Transmitter Settings Software (Windows/Mac)

Get the latest version of the Epson Wireless Transmitter Settings software.

Visit [epson.sn](http://epson.sn).



You need to install Microsoft .NET Framework 4.6.2 or later before using the Epson Wireless Transmitter Settings software (Windows).



# Performing Pairing and Updating Firmware


Follow these instructions to pair the transmitter to the receiver (a base unit or a supported projector), and to update the transmitter firmware.

## ► **Related Links**

- "Performing the Pairing" [p.10](#)
- "Updating the Firmware" [p.12](#)

You can use the pairing function to write network information to the transmitter and then wirelessly connect the transmitter to the receiver (base unit or supported projector).

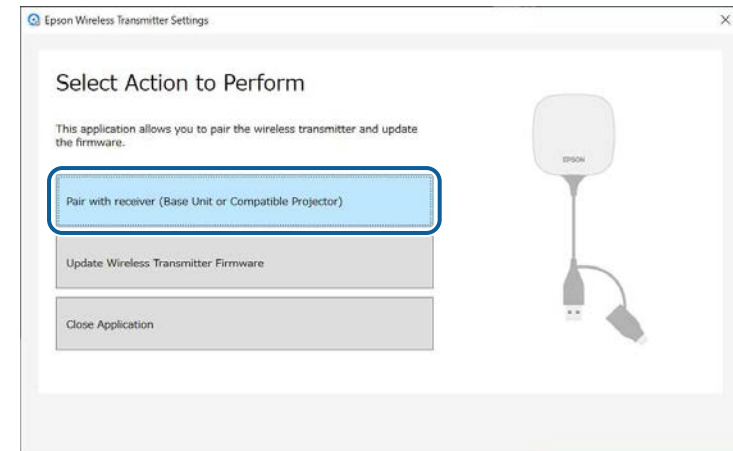
When pairing is finished, you can attach the transmitter to any Windows or Mac computer and easily project your images. See the *Epson Wireless Presentation System User's Guide* for details.



- You can perform the pairing with the projectors that support the wireless presentation system.
- You need to perform pairing again if the following setting in the receiver's **Network** menu has been changed after pairing.
  - Base unit: **Base Unit Name**
  - Supported projector: **Projector Name** or **Passphrase**

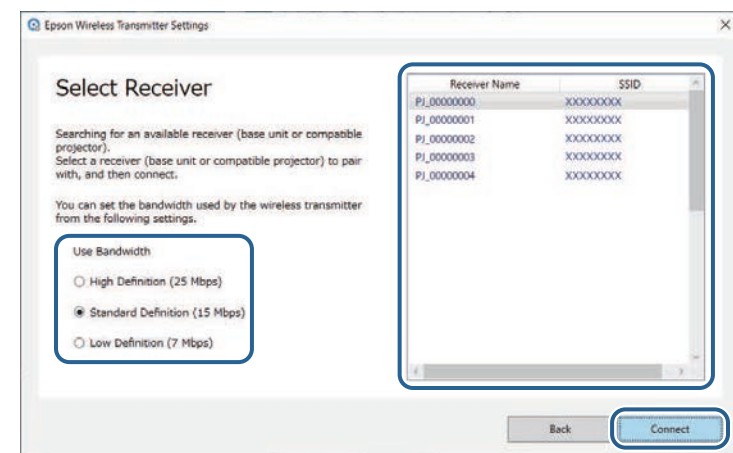
- 1** Select the necessary settings to connect your computer to a wireless LAN. See the documentation supplied with your computer for more details.
- 2** If you want to perform pairing with a projector, set the projector up as indicated below.
  - Install the Epson wireless LAN module.
  - Turn on the **Simple AP** setting.
- 3** Select **Start Pairing** in the **Network** menu of the base unit or projector.
- 4** Start the Epson Wireless Transmitter Settings software.
  - Windows: Double-click **Epson Wireless Transmitter Settings.exe**.
  - Mac: Double-click **Epson Wireless Transmitter Settings.app**.

**5** Select **Pair with receiver (Base Unit or Compatible Projector)**.



**6** Click **Next**.

**7** Select the receiver you want to connect to from the list, and select the bandwidth, and then click **Connect**.



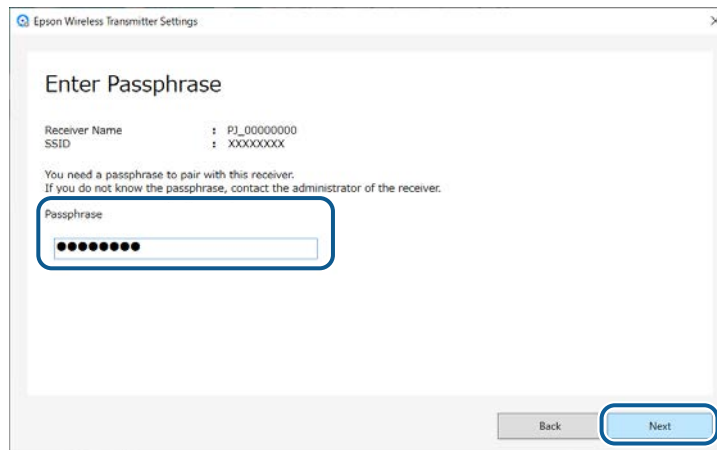


- Choose a bandwidth based on your network environment.
- **High Definition (25 Mbps):** Controls the bandwidth of data up to 25 Mbps and transfers the image with the high definition.
  - **Standard Definition (15 Mbps):** Controls the bandwidth of data up to 15 Mbps and transfers the image with the standard definition.
  - **Low Definition (7 Mbps):** Controls the bandwidth of data up to 7 Mbps. The projected image quality may decline but the network load is reduced.

The bandwidth may occasionally exceed the value you selected because each value in the list is an average value measured over 30 seconds.

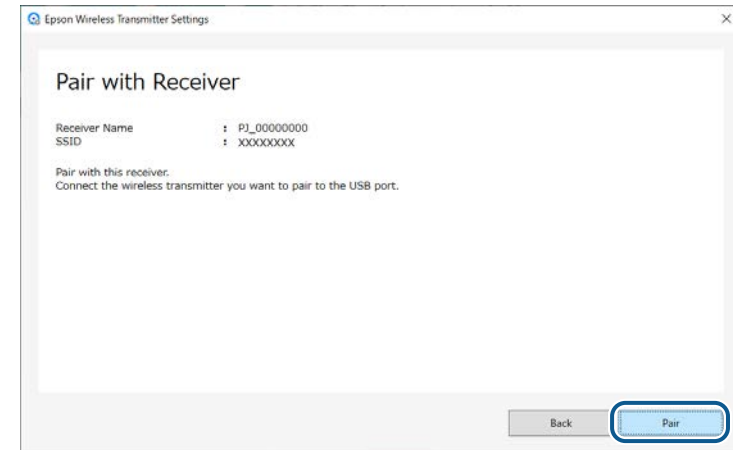
You can select the bandwidth separately for each wireless transmitter.

- 8** When the following screen is displayed, enter the passphrase set on the base unit or projector, and then click **Next**.



- 9** Connect the wireless transmitter to a USB port on your computer.

- 10** Click **Pair**.



When the pairing is complete, a completion message is displayed on the computer screen.

### Caution

Do not disconnect the wireless transmitter or power cord of the receiver while pairing. If the power cord or wireless transmitter is disconnected, the receiver may not start correctly. Make sure the completion message is displayed before disconnecting the wireless transmitter.

- 11** Do one of the following.
- If you want to pair another wireless transmitter, select **Pair Another Wireless Transmitter**. Then go to step 8.
  - If you are done pairing, select **Finish**.
- 12** Click **Finish** again.
- 13** Press the [Enter] [↵] or [Esc] button on the receiver's remote control or control panel to exit pairing mode.

You can update firmware of a transmitter.



Responsibility for updating the firmware lies with the customer. If a firmware update fails due to problems such as a power failure or communication problems, a fee will be charged for any necessary repairs.

**1** Download the projector firmware file from the Epson Web site.

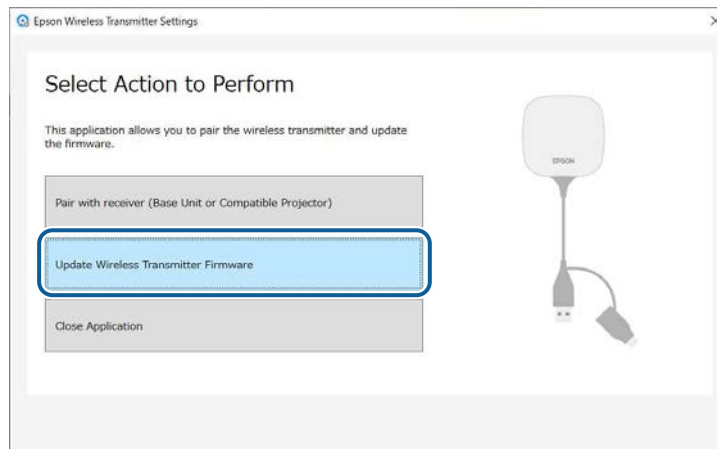


- Do not change the firmware's file name. If the file name is changed, the firmware update will not start.
- Check that the firmware file you copied is the correct file for your projector model. If the firmware file is not correct, the firmware update will not start.

**2** Start the Epson Wireless Transmitter Settings software.

- Windows: Double-click **Epson Wireless Transmitter Settings.exe**.
- Mac: Double-click **Epson Wireless Transmitter Settings.app**.

**3** Select **Update Wireless Transmitter Firmware**.

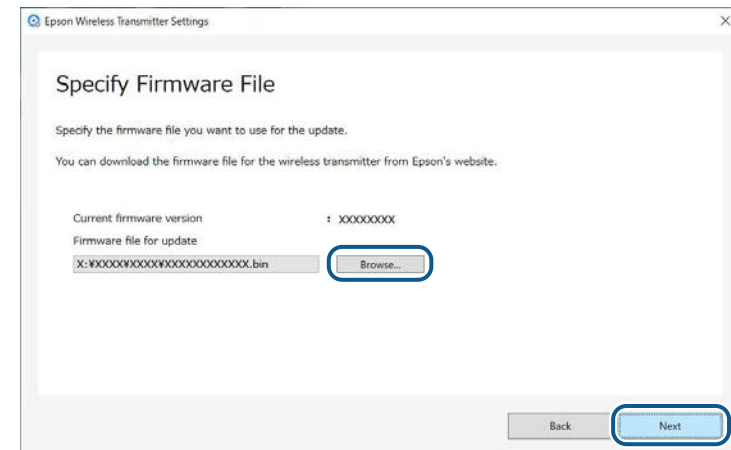


**4** Connect the wireless transmitter to a USB port on your computer.

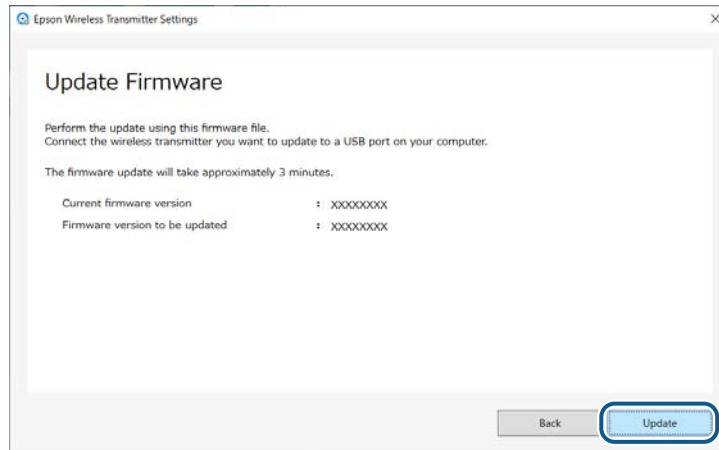


You can check the current firmware version on the application's screen.

**5** Select **Browse...** to specify the downloaded firmware file, and then click **Next**.



## 6 Click Update.



### Caution

Do not turn off the computer or disconnect the wireless transmitter from the computer while updating. Make sure the completion message is displayed before disconnecting the wireless transmitter.

- 7 Follow the on-screen instructions.
- 8 When the update finishes, perform the steps to safely remove the wireless transmitter from the computer.
- 9 If you want to update the firmware for another wireless transmitter, click **Update Firmware for Another Wireless Transmitter**, return to step 5, and follow the on-screen instructions.

When the update finishes, click **Complete Firmware Update**.

# Solving Problems

See the following section to check for solutions to problems you may have using the Epson Wireless Transmitter Settings software.

## ► **Related Links**

- "Solving Pairing and Firmware Updating Problems" [p.15](#)

Try these solutions depending on your situation.

## ► Related Links

- "Solutions When You Cannot Select the Receiver" [p.15](#)
- "Solutions When You Cannot Perform Pairing" [p.15](#)
- "Solutions When You Cannot Update Firmware" [p.15](#)

---

## Solutions When You Cannot Select the Receiver

If you cannot select the receiver (base unit or a supported projector), try the following solutions.

- Make sure that the power is on for the receiver.
- Check the environment in which the receiver is located.
  - Connect the specified wireless LAN unit to the projector securely. See your projector *User's Guide* for details.
  - Check for any obstacles between the computer and receiver, and change their position to improve communication.
- Check the receiver's network settings.
  - Turn on the projector's **Simple AP** setting.
  - Select **Start Pairing**.
  - Turn on the wireless LAN setting, if necessary.
  - When you change the projector's passphrase from the initial one, set the same passphrase to the computer and the projector.
  - Close the network settings menu on the receiver.
- Check the computer's network settings.
  - Make sure you are using a computer that can connect to a wireless LAN.
  - Enable the wireless LAN setting or AirPort on your computer.

---

## Solutions When You Cannot Perform Pairing

If you cannot perform pairing, try the following solutions.

- Make sure that the wireless transmitter is connected correctly.

---

## Solutions When You Cannot Update Firmware

If you cannot update firmware, try the following solutions.

- The firmware file may be corrupted. Download the firmware again, and then try updating again.
- Make sure that the wireless transmitter is connected correctly.

# Appendix

See these sections to learn more about the Epson Wireless Transmitter Settings software.

## ▶ **Related Links**

- "Removing the Software" [p.17](#)
- "Notices" [p.18](#)



Remove the downloaded file from your computer.

Check these sections for important notices about your software.

► **Related Links**

- "Copyright Notice" [p.18](#)
- "About Notations" [p.18](#)
- "General Notice" [p.18](#)
- "Copyright Attribution" [p.18](#)

---

## Copyright Notice

All rights reserved. No part of this publication may be reproduced, stored in a retrieval system, or transmitted in any form or by any means, electronic, mechanical, photocopying, recording, or otherwise, without the prior written permission of Seiko Epson Corporation. No patent liability is assumed with respect to the use of the information contained herein. Neither is any liability assumed for damages resulting from the use of the information contained herein.

Neither Seiko Epson Corporation nor its affiliates shall be liable to the purchaser of this product or third parties for damages, losses, costs, or expenses incurred by the purchaser or third parties as a result of: accident, misuse, or abuse of this product or unauthorized modifications, repairs, or alterations to this product, or (excluding the U.S.) failure to strictly comply with Seiko Epson Corporation's operating and maintenance instructions.

Seiko Epson Corporation shall not be liable against any damages or problems arising from the use of any options or any consumable products other than those designated as Original Epson Products or Epson Approved Products by Seiko Epson Corporation.

The contents of this guide may be changed or updated without further notice.

Illustrations in this guide and the actual projector may differ.

---

## About Notations

- Microsoft® Windows® 8.1 operating system
- Microsoft® Windows® 10 operating system

In this guide, the operating systems above are referred to as "Windows 8.1" and "Windows 10". Furthermore, the collective term "Windows" is used to refer to them all.

- macOS 10.13.x
- macOS 10.14.x
- macOS 10.15.x
- macOS 11.0.x

In this guide, the collective term "Mac" is used to refer to all of the operating systems above.

---

## General Notice

EPSON is a registered trademark, and EXCEED YOUR VISION and its logo is registered trademark or trademark of Seiko Epson Corporation.

Mac and macOS are registered trademarks of Apple Inc.

Microsoft and Windows are trademarks or registered trademarks of Microsoft Corporation in the United States and/or other countries.

Other product names used herein are also for identification purposes only and may be trademarks of their respective owners. Epson disclaims any and all rights in those marks.

Software Copyright: This product uses free software as well as software to which this company holds the rights.

---

## Copyright Attribution

This information is subject to change without notice.

© 2021 Seiko Epson Corporation

2021.2 414138200EN