

Sales

801-822-5450
sales@luxul.com

Technical Support

801-822-5450
support@luxul.com

Copyright and Trademark Notices

No part of this document may be modified or adapted in any way, for any purposes without permission in writing from Luxul. The material in this document is subject to change without notice. Luxul reserves the right to make changes to any product to improve reliability, function, or design. No license is granted, either expressly or by implication or otherwise under any Luxul intellectual property rights. An implied license only exists for equipment, circuits and subsystems contained in this or any Luxul product.

© Copyright 2017 Luxul. All rights reserved. The name Luxul, the Luxul logo, the Luxul logo mark and Simply Connected are all trademarks and or registered trademarks of Luxul Wireless, Inc. All other trademarks and registered trademarks are property of their respective holders.

LUX-QIG-XGS-1024S-v5 0721809

A brand of  legrand®

Fold



QUICK INSTALL GUIDE



24 Port Gigabit Flex Mount Switch XGS-1024S

Includes:

- ▶ XGS-1024S 24-Port Gigabit Flex Mount Switch
- ▶ Rack Mount Kit
- ▶ Rubber Feet
- ▶ Power Cord

LUXUL

Fold

INSTALLATION AND SETUP

1 Physical Installation

The XGS-1024S can easily be surface- or wall-mounted, or installed in a standard 19" rack. A mounting kit is included for installing and stabilizing the switch.

Rack Mount

Use the included screws to attach the mounting ears to each side of the switch. Mount the switch in the rack with the LEDs facing outwards. Be sure the switch is level and properly secured in the rack.

Wall Mount

The included rack ears double as wall mounts. Simply rotate the mounts 90-degrees from how they would be used in a rack installation, and securely attach the XGS-1024S to a wall or other vertical surface.

Desktop Setup

For use as a desktop device, position and apply the included rubber feet to the bottom of the XGS-1024S.



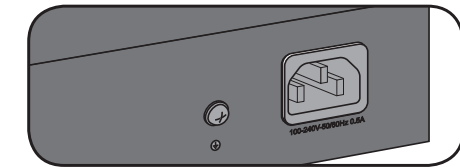
XGS-1024S Front Panel

Fold

2 Connecting Power

The rear panel has one AC power port and one grounding terminal. Use the included power cable to connect the XGS-1024S to a surge-protected outlet. The AC input socket is on the rear panel, and the built-in power supply supports 100-240VAC at 50/60Hz.

- ✔ **NOTE:** *If the switch is installed in a location where a grounded outlet is unavailable, the grounding terminal can be used to connect the switch to ground.*



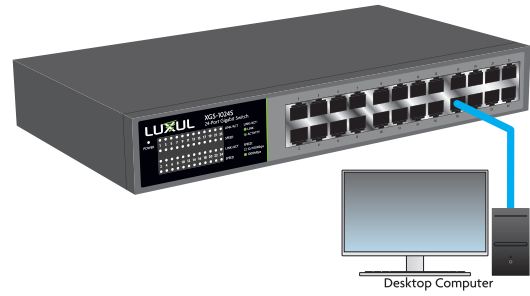
XGS-1024S Rear Panel

- ⚠ **CAUTION:** *Use only the correct power cord for your environment. If any voltage other than 100-240 is applied, it will result in damage to the XGS-1024S.*

3 Connecting Ethernet

Connecting Devices

Use standard Ethernet CAT5, CAT5e, or CAT6 cable to connect the XGS-1024S to a device as described below (CAT6 must be used in order to achieve full Gigabit bandwidth). The XGS-1024S will automatically adjust to the characteristics (speed/duplex) of the device to which it is connected.



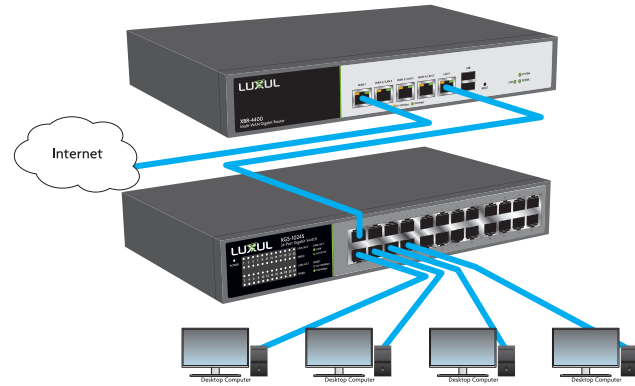
Connecting the XGS-1024S to a Device

When a device is properly connected, the Link/Activity LEDs for each port lights up green/orange. Please refer to the section on LED Indicators for definitions and troubleshooting.

Fold

Connecting to a Router or Other Switch

For best performance, and to maximize available ports, Luxul recommends connecting LAN devices to the XGS-1024S, then connecting the switch to a router LAN port or another switch as shown in the illustration.



Connecting the XGS-1024S to a Router or Switch

When devices are properly connected, the Link/Activity LEDs for each port light up green/orange. Refer to the section on LED Indicators for definitions and troubleshooting.

Fold

4 Hardware Operation

Front Panel

The front panel of the XGS-1024S includes twenty-four Link/Activity and Speed LEDs and one power LED. For more information on these LEDs, refer to the following table which describes these indicators in detail.



XGS-1024S Front Panel View

Fold

The LED indicators of the XGS-1024S include one Power indicator, 24 Link/Activity indicators, and 24 Speed indicators. These LED indicators show the operating status of the XGS-1024S and each switch connection.

The following table shows the LED indicators of the XGS-1024S along with a description of each indicator:

LED	Status	Description
Power LED	On	The XGS-1024S is powered.
	Off	The XGS-1024S is unpowered. Check the AC power cord to ensure proper connection to the outlet and switch.
Link/Activity	On	Indicates a device is connected to the port of the XGS-1024S.
	Blinking	Indicates the port is transmitting or receiving data.
	Off	Indicates the port is not connected to a device or the device is not powered.
Speed	On	Indicates the XGS-1024S is connected to the device at 1000Mbps.
	Off	Indicates no device connected or the connected device does not support 1000Mbps and is connected at something less than 1000Mbps.